



APPENDIX B

Landscape Concept



This page has been left blank intentionally.



Planting Schedule

Osgood Street - generally a continuation of the treatment to Burnings site. Informal double avenue of large street trees and screen planting of undercroft carparking.

Trees

Eucalyptus bigalenta

Feature Planting

Livistona bentharii

Native Shrubs and Grasses

Acacia gonocarpa
Acacia wickhamii
Chrysogonon elongatus
Crotolaria novae-hollandiae
Grevillea dryandri

Car Park Planting - Provide a shade canopy to the car parking areas within the limitations of space

Eucalyptus alba

Building Surrounds and Undercroft Planting - Mix of native shrubs to provide colour and textural contrast and reduce visual impact of carparking.

Cycas armstrongii (transplanted)
Grevillea dryandri
Leea rubra
Melastoma malabathricum
Stenochleana palustris
Vitex rotundifolia

Boundary Planting and Landscape Buffer - Rehabilitation of native species using direct seeding. Height restrictions and access requirements within buffer zone to be in accordance with PowerWater Easement Guidelines

Acacia dimidiata
Acacia gonocarpa
Acacia lamprocarpa
Acacia latescens
Acacia limbata
Acacia orthocarpa
Alstonia actinophylla
Brachychiton diversifolius
Cycas armstrongii (transplanted)
Cochlospermum fraseri
Chlorodendrum floribundum
Denhamia obscura
Erthrophleum chlorostachys
Eucalyptus bleeseri
Eucalyptus clavigera
Eucalyptus confertifolia
Eucalyptus herbertiana
Eucalyptus miniata
Eucalyptus polycarpa
Eucalyptus tetradonta
Eucalyptus tintinans
Ficus aculeate
Gardenia megasperma
Grevillea dryandri
Grevillea parallela
Grevillea pteridifolia
Lophopstemon lactifolius
Petalostigma pubescens
Sterculia quadrifida
Terminalia ferdinandiana
Terminalia carpentariae
Wrightea pubescens

LEGEND:



MASS PLANTING - NATIVE SHRUBS AND GROUND COVERS



REHABILITATION NATIVE DIRECT SEEDING



DETENTION POND



IRRIGATED GRASS VERGE



NATIVE TREES PLANTING



FEATURE PLANTING



SERVICE ROAD

NOTES:

- EXISTING NATIVE VEGETATION RETAINED AND PROTECTED WHEREVER CLEAR OF WORK AREAS.
- AREAS OF DISTURBED NATIVE VEGETATION TO BE REHABILITATED USING DIRECT SEEDING.
- CYCAS ARMSTRONGII WITHIN WORK AREAS TO BE TRANSPLANTED IN ACCORDANCE WITH CYCAD MANAGEMENT PLAN.
- DETENTION POND TO BE FULLY VEGETATED WITH SUITABLE WETLAND MARGIN SPECIES.

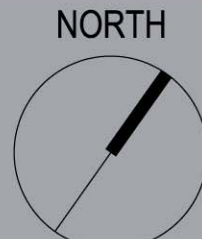


TICOR

1: 750@A1

NORTH

0 5m 10m 15m 20m 25m 50m



Darwin Bulky Goods • Darwin

NS 596

Sk 1

28/05/08

Issue: -



Typical site vegetation to be retained



Proposed landscape to Osgood Street



Landscape buffer area at western end of site to be rehabilitated



Degraded areas within buffer landscape zone to be rehabilitated



Landscape zone within electrical service easement to be rehabilitated



Degraded areas along Bagot Road to be rehabilitated



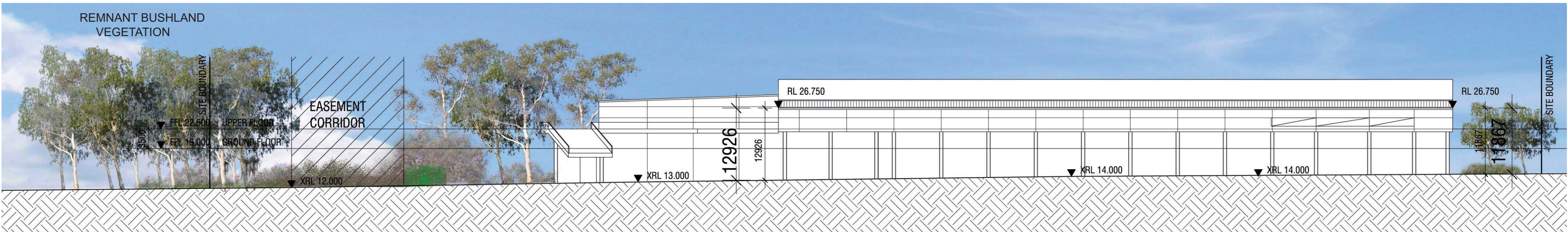
Cycas armstrongii to be transplanted as needed



Typical rehabilitated area within electrical service easement



Typical rehabilitated area with native vegetation direct seeding



SECTION A-A
SCALE: 1:500@A2

